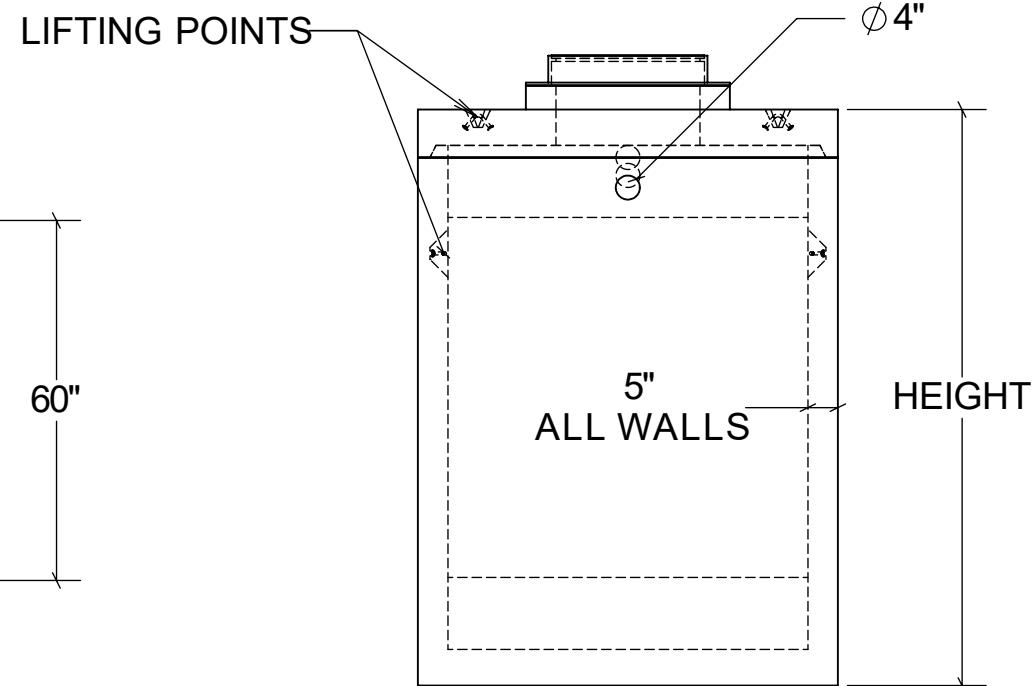
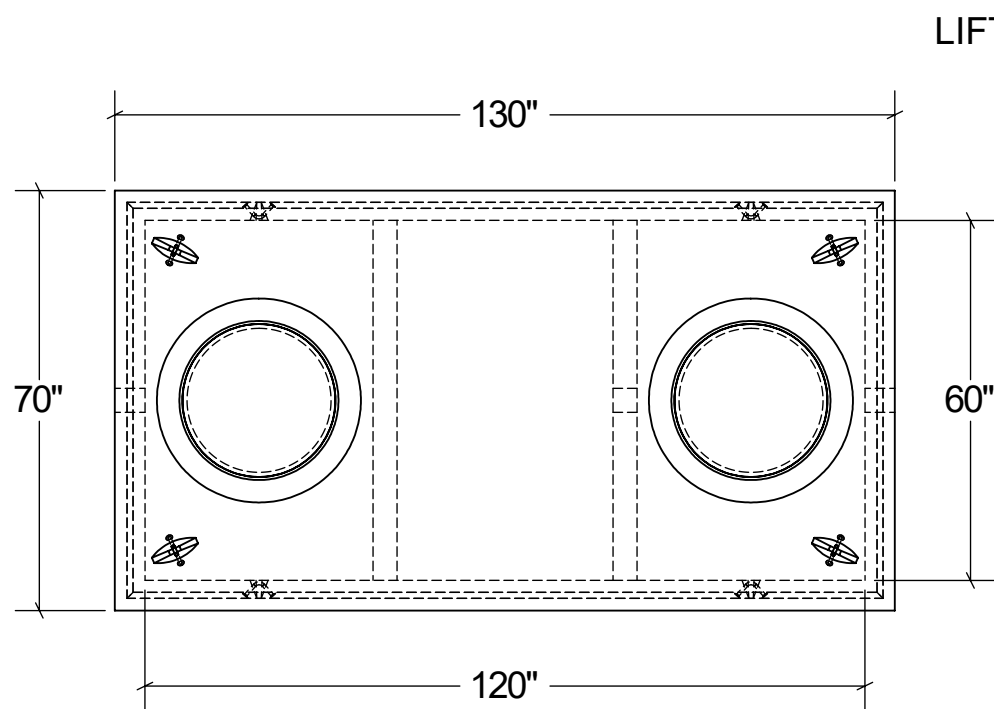


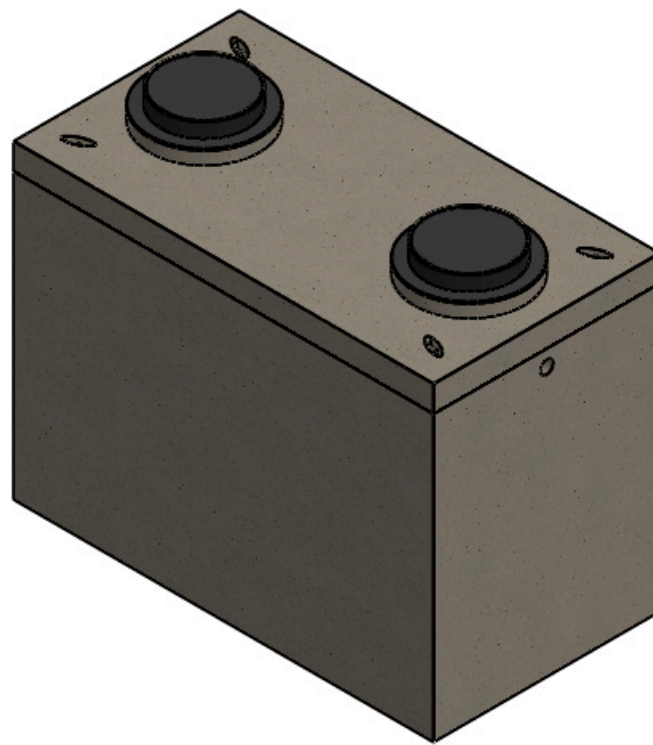
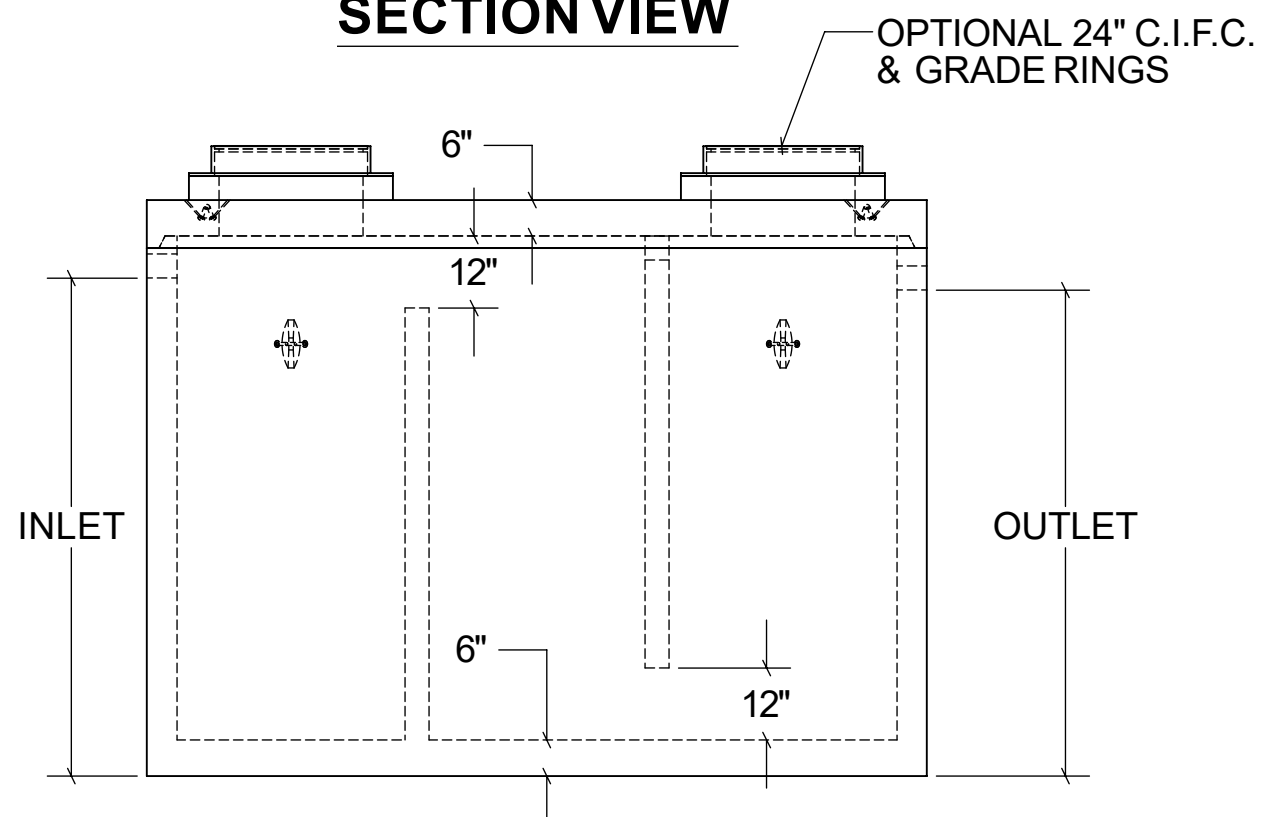
2-BAFFLE SAND/OIL INTERCEPTOR

TOP VIEW

END VIEW



SECTION VIEW



INTERCEPTOR DIMENSIONS

GAL	HEIGHT	INLET	OUTLET	LBS.
1000	60"	47"	45"	18,387
1500	78"	65"	63"	22,102
2000	96"	83"	81"	25,817

STRUCTURAL NOTES:

1. ALL CONCRETE SHALL BE PLACED IN A SINGLE CONTINUOUS OPERATION (MONOLITHIC POUR).
2. CONCRETE SHALL HAVE A MINIMUM 28-DAY COMPRESSIVE STRENGTH OF 4000 PSI. CONCRETE AGGREGATE SHALL CONFORM TO ASTM C33.
3. CEMENT SHALL CONFORM TO ASTM C150, TYPE I, II, OR III.
4. ALL STEEL REINFORCEMENT SHALL BE PLACED AS PER ACI 318-89.
5. DESIGN LOAD IS 500 PSF

DRAWN:

04/11/23

WEIGHT:

VARIES

SCALE:

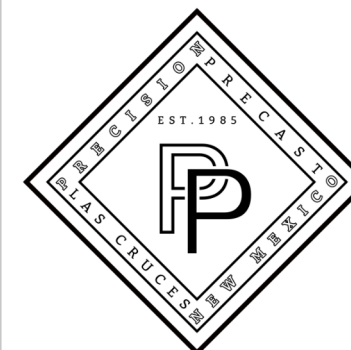
VARIES

MATERIAL:

4,000 PSI
CONCRETE

FINISH:
FORM FINISH

DIMENSIONS ARE IN
FEET & INCHES
TOLERANCES: ± 4-IN.



PRECISION PRECAST

575-382-0501

SALES@PRECISIONPRECAST.CO

WWW.PRECISIONPRECAST.CO

PROPRIETARY AND CONFIDENTIAL THE INFORMATION CONTAINED IN THIS DRAWING IS THE SOLE PROPERTY OF LECO INDUSTRIES INC DBA PRECISION PRECAST. ANY REPRODUCTION PART OR AS A WHOLE WITHOUT WRITTEN PERMISSION OF LECO INDUSTRIES, INC DBA PRECISION PRECAST IS PROHIBITED.