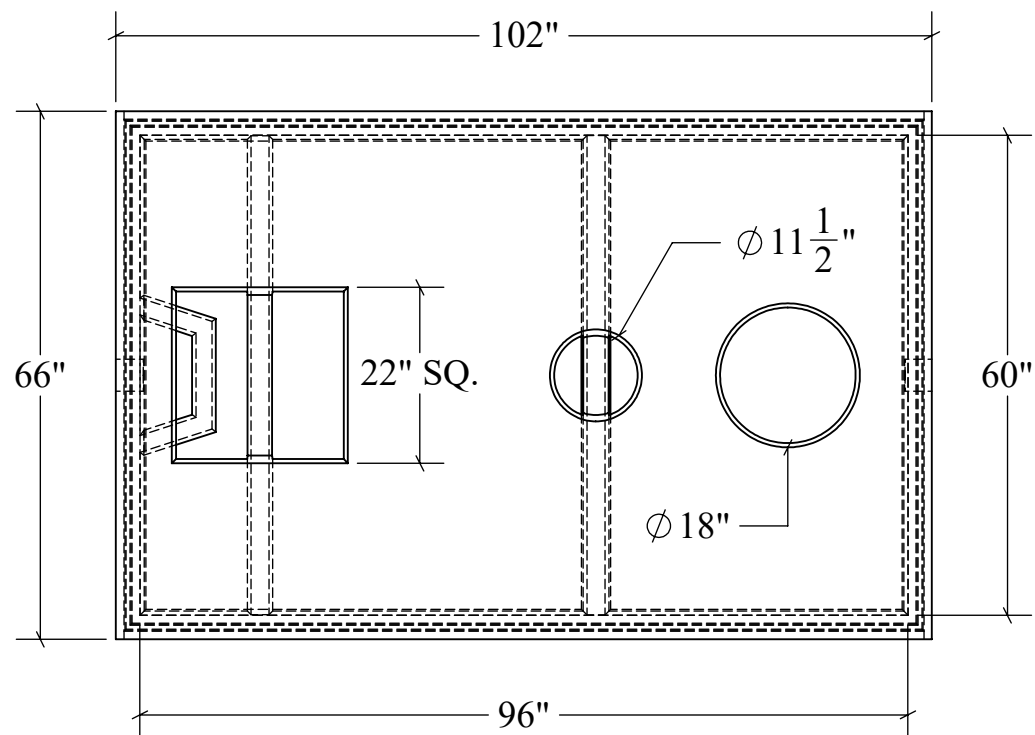
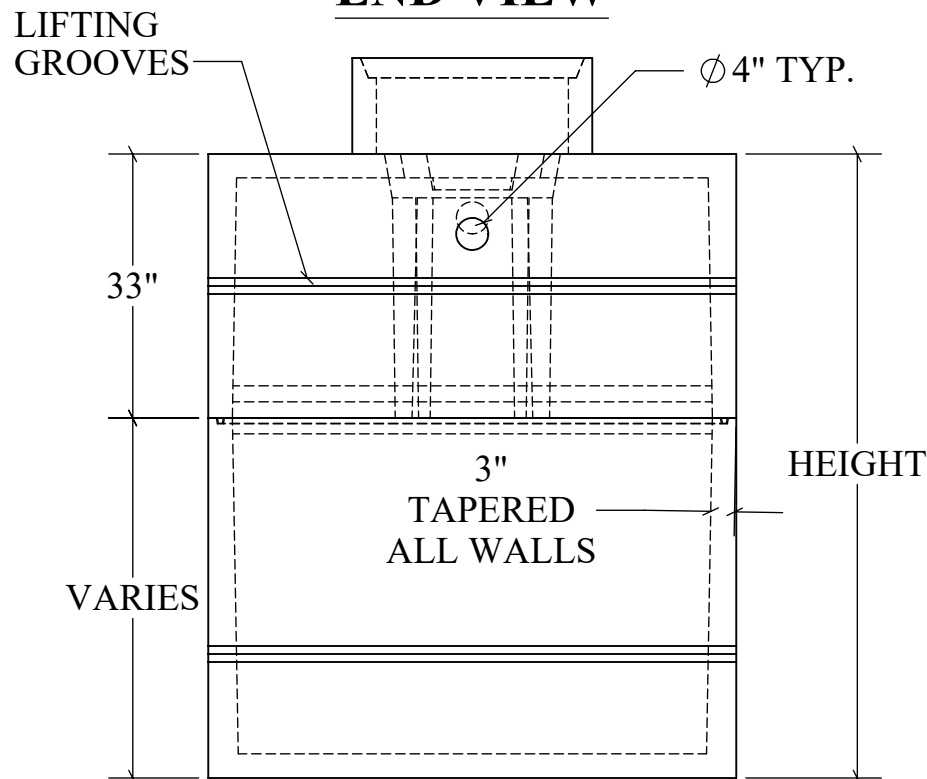


# RESIDENTIAL SEPTIC TANK

**TOP VIEW**

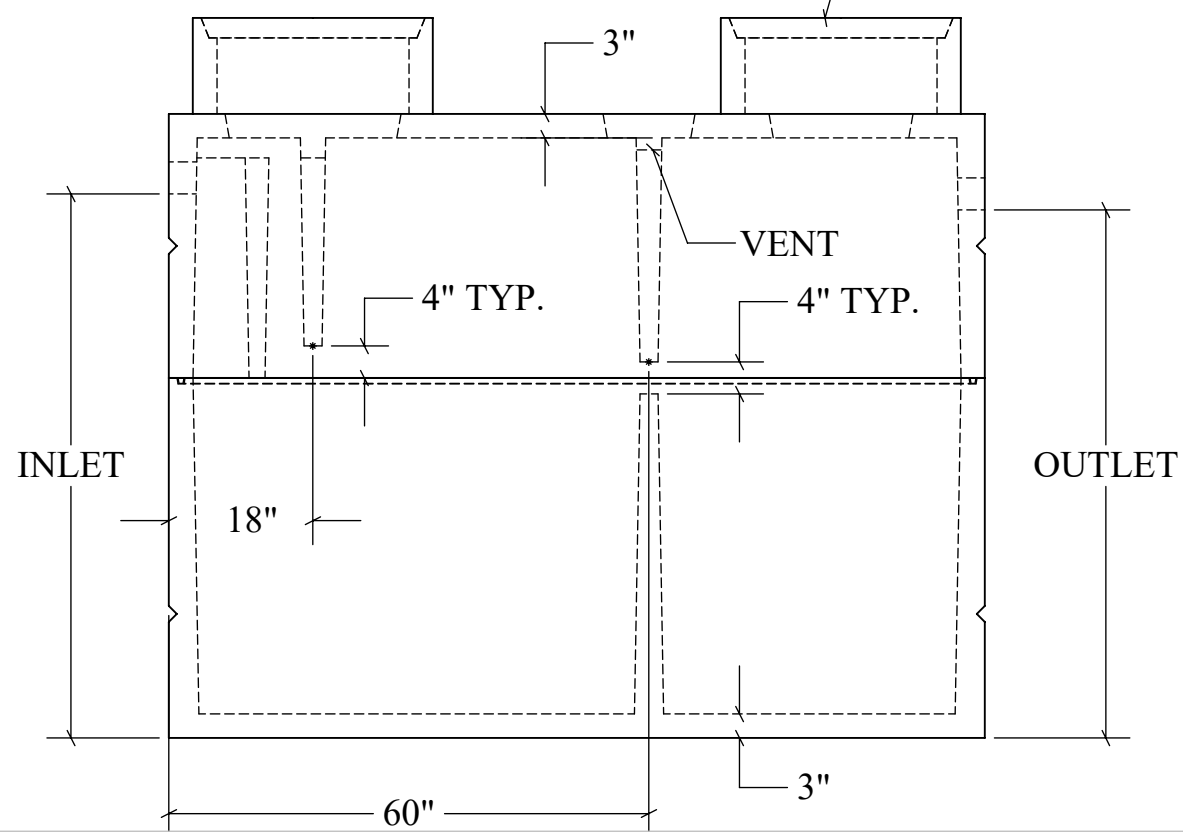


**END VIEW**

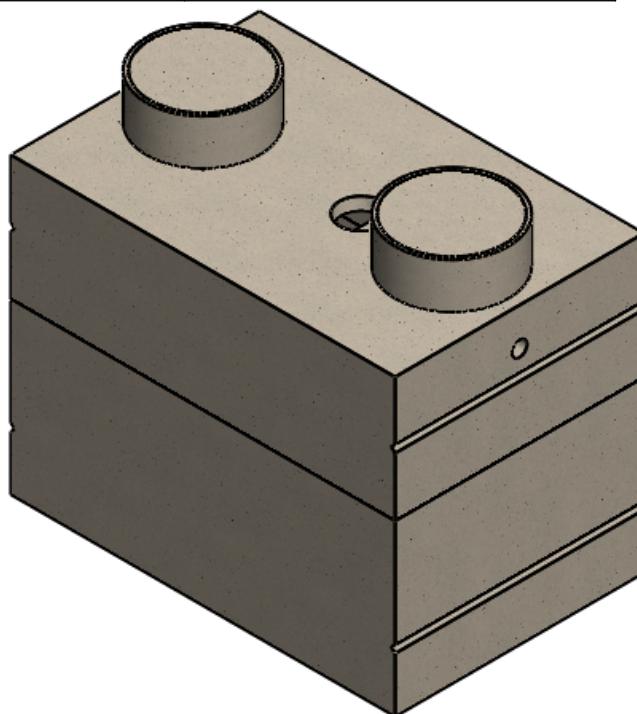


**SECTION VIEW**

OPTIONAL  $\phi 24''$  RISERS & LIDS



NMED CERTIFICATION	
GAL	NM CERT #
1200	NM-98-06-168
1500	NM-98-06-168A



**TANK DIMENSIONS**

GAL	HEIGHT	INLET	OUTLET	LBS.
1200	66"	56"	54"	10,062
1500	78"	68"	66"	11,486

**STRUCTURAL NOTES:**

1. ALL CONCRETE SHALL BE PLACED IN A SINGLE CONTINUOUS OPERATION (MONOLITHIC POUR).
2. CONCRETE SHALL HAVE A MINIMUM 28-DAY COMPRESSIVE STRENGTH OF 4000 PSI CONCRETE AGGREGATE SHALL CONFORM TO ASTM C33.
3. CEMENT SHALL CONFORM TO ASTM C150, TYPE I, II, OR III.
4. ALL STEEL REINFORCEMENT SHALL BE PLACED AS PER ACI 318-89
5. INLET AND OULET MUST HAVE FLEXIBLE CONNECTOR PER ASTM C 1644
6. TANK MARKINGS SHALL BE PER IAPMO/ANSI Z1000-2013
7. ENGINEERED AND DESIGNED FOR 300 PSF. LOAD.

<b>DRAWN:</b> 06/07/21	<b>WEIGHT:</b> VARIES	<b>SCALE:</b> VARIES
<b>MATERIAL:</b> 4,000 PSI CONCRETE	<b>FINISH:</b> FORM FINISH	DIMENSIONS ARE IN FEET & INCHES TOLERANCES: $\pm 4$ -IN.



**PRECISION PRECAST**  
575-382-0501  
SALES@PRECISIONPRECAST.CO  
WWW.PRECISIONPRECAST.CO

PROPRIETARY AND CONFIDENTIAL THE INFORMATION CONTAINED IN THIS DRAWING IS THE SOLE PROPERTY OF LECO INDUSTRIES INC DBA PRECISION PRECAST. ANY REPRODUCTION PART OR AS A WHOLE WITHOUT WRITTEN PERMISSION OF LECO INDUSTRIES, INC DBA PRECISION PRECAST IS PROHIBITED.